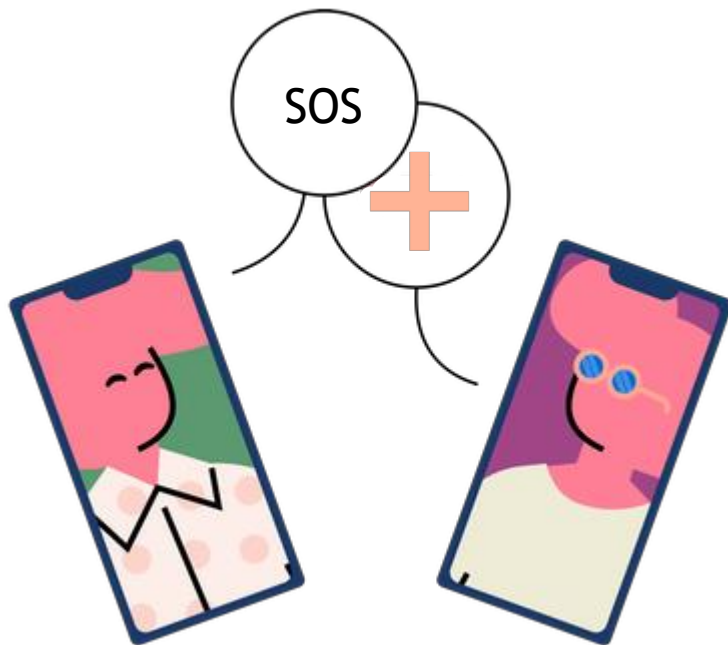




# Safety / CLCC



Meeting point : Door C, ambulance parking

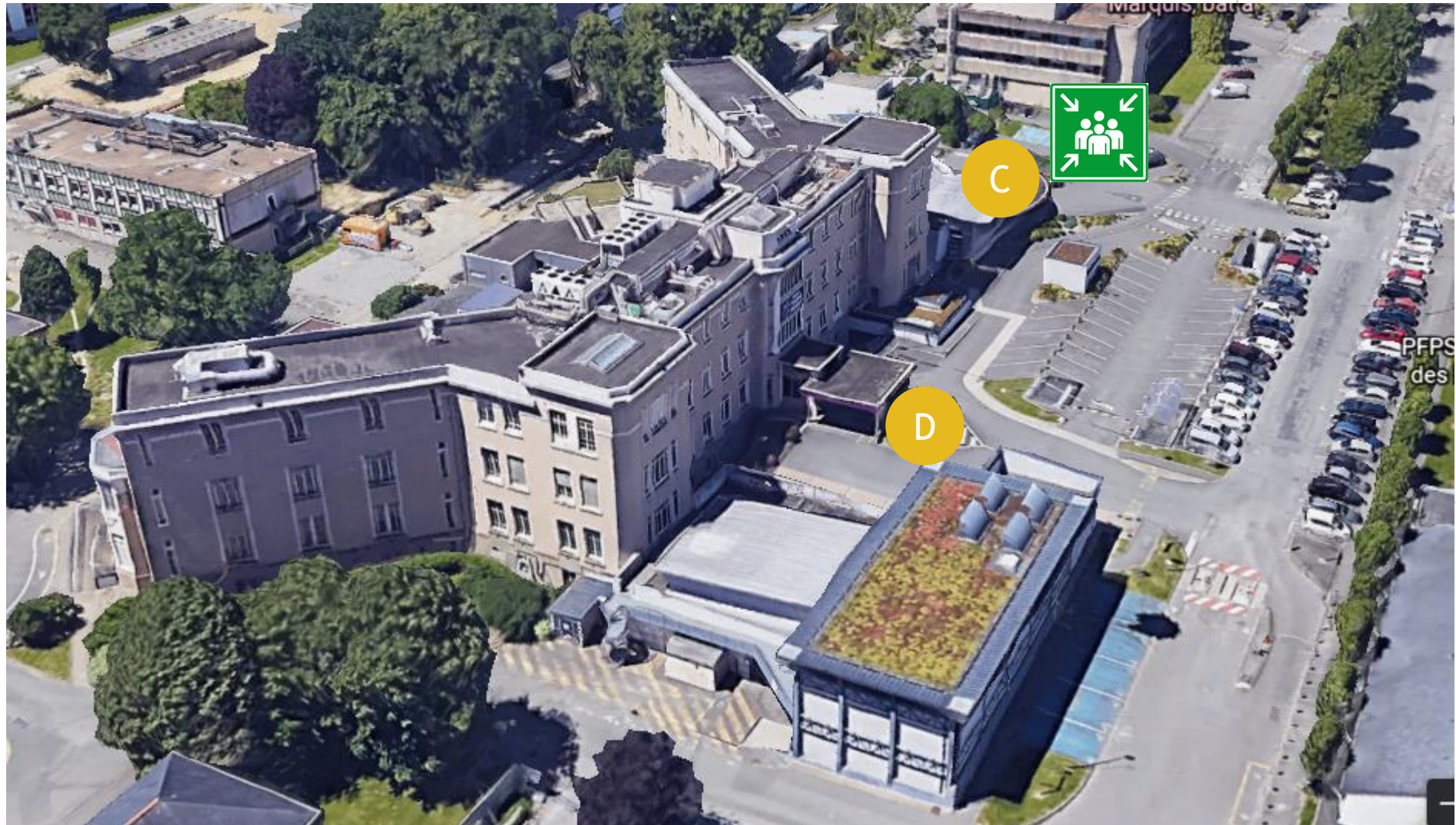


## EMERGENCY INTERNAL PHONE NUMBER with the phone in office 127

- ▶ Safety of personnel : 35 37
-  ▶ Fire : 35 35
-  ▶ Vital emergency : 35 38
- ▶ Technical emergency : 35 36

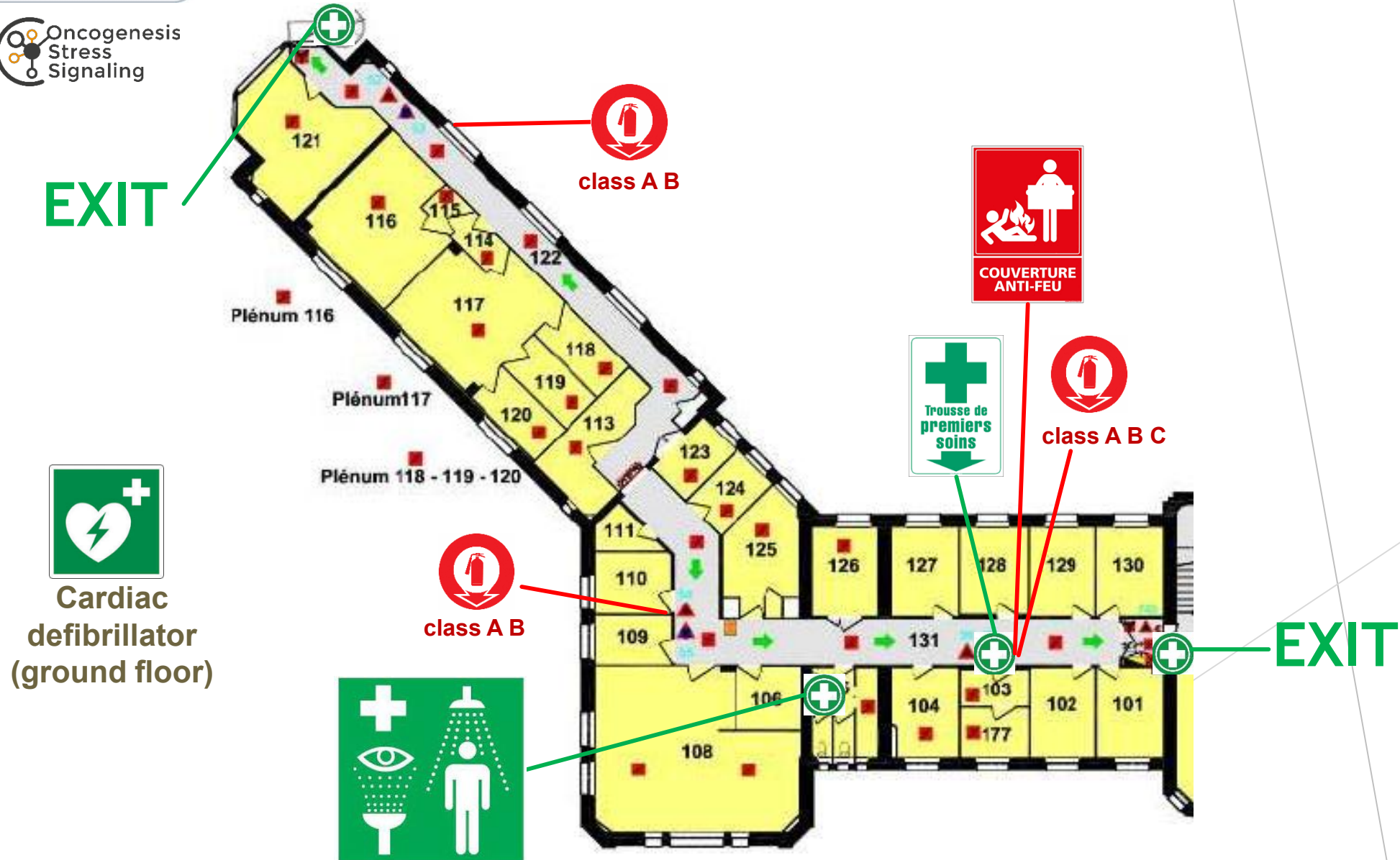
**Or with an other phone :** Security post of CHU 02 99 28 42 06

# Meeting point CLCC





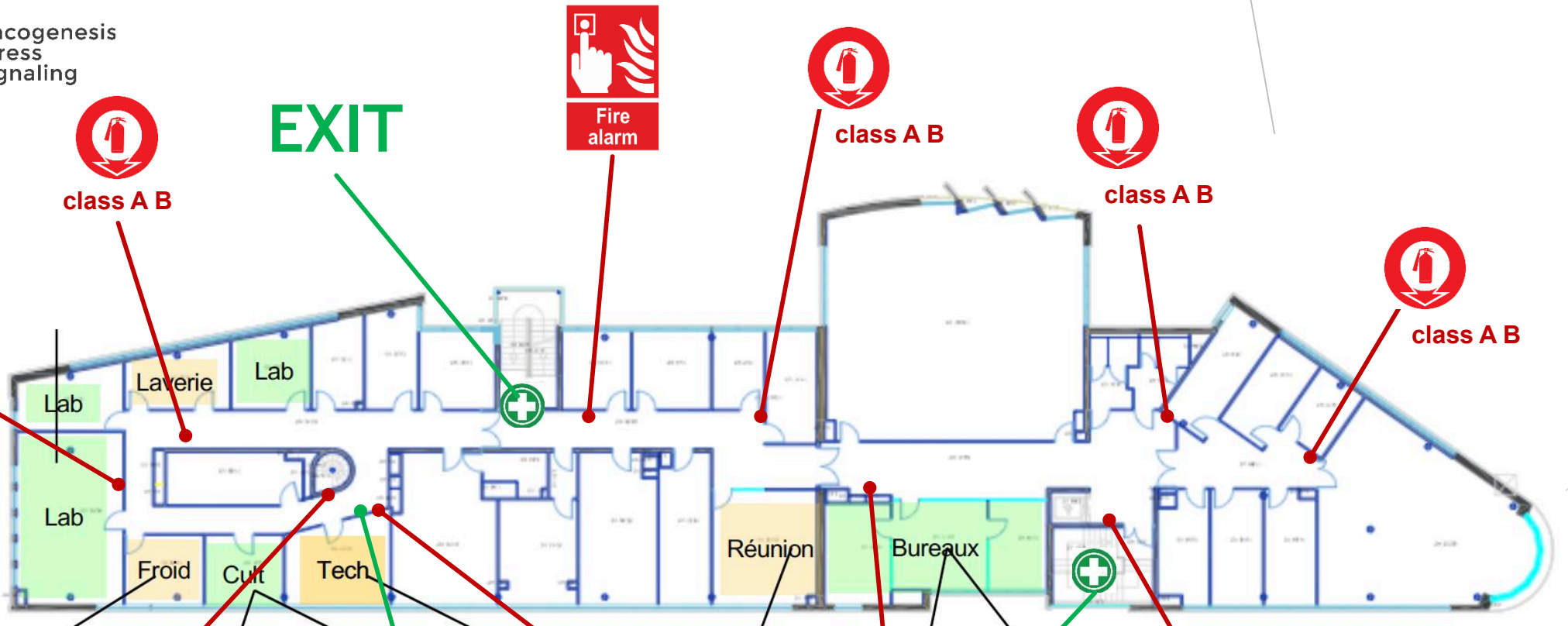
# Evacuation plan and safety equipment



# Evacuation plan and safety equipment B15 2<sup>nd</sup> floor



COUVERTURE ANTI-FEU  
fire blanket



class A B

Fire alarm

class A B

class A B

class A B

class A B  
class A

class A B  
class A

Trousse de premiers soins

emergency eye wash

emergency shower

emergency eye wash  
emergency shower  
first aid kit



cardiac defibrillator  
(ground floor)

# Safety rules / CLCC



## Light signal

- ▶ In front of the door, get down and stand next to it.
- ▶ Ask if a victim is inside
- ▶ Touch the door before open it. An warm door means the fire is inside
- ▶ Quickly open the door to see where the victim is
- ▶ Evacuate the victim

## Use a extinguisher

- ▶ Attack the fire in its base with a safety distance
- ▶ Close the door next to the sinister
- ▶ Don't go to the smoke
- ▶ Don't take risks !



# Safety rules

## ► When to evacuate ?

Fire or  
presence  
of smoke



No  
energy



Gas or  
toxic  
product  
leakage



Bomb  
alert



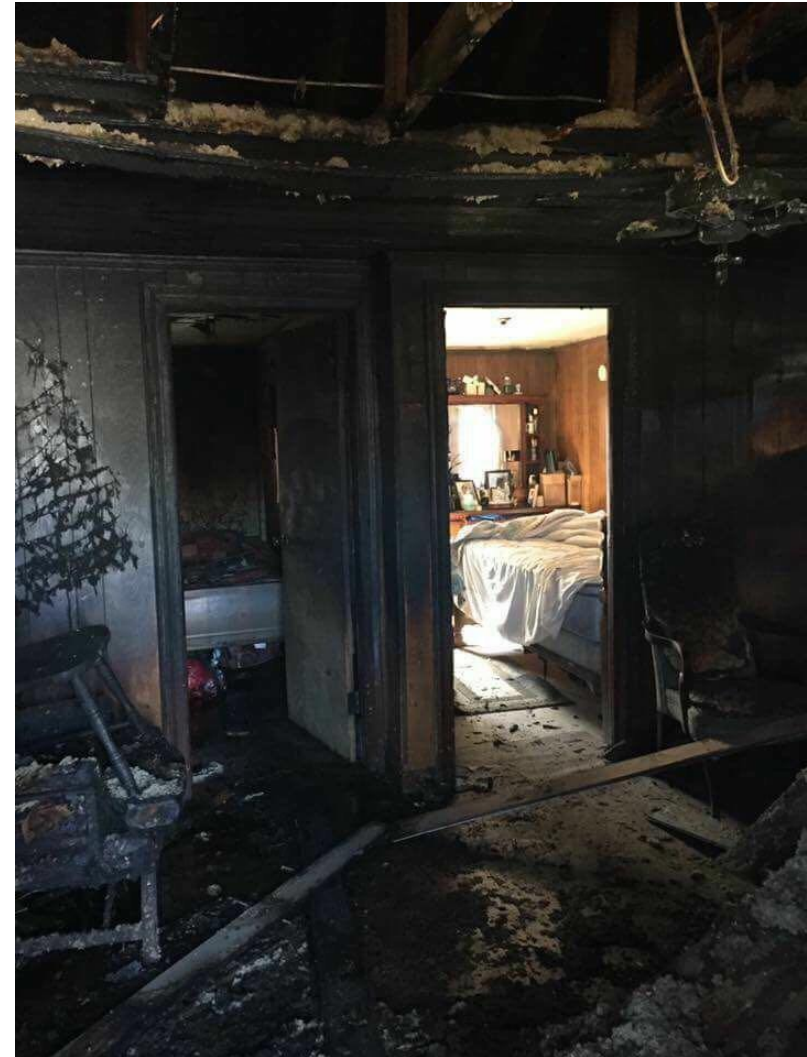
In event of evacuation with smoke:

- Get down to protect you of intoxication
- If you can't evacuation: close the door and caulk it

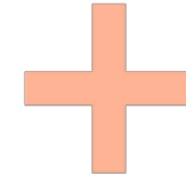


# Safety rules

- ▶ Close the door when you leave a room to protect material, your scientific data etc.



# Safety / First-aiders



CLCC



Tony  
Avril

Matthieu  
Le Gallo

Sophie  
Martin

Quentin  
Picouays

BAT 15

Call emergency number