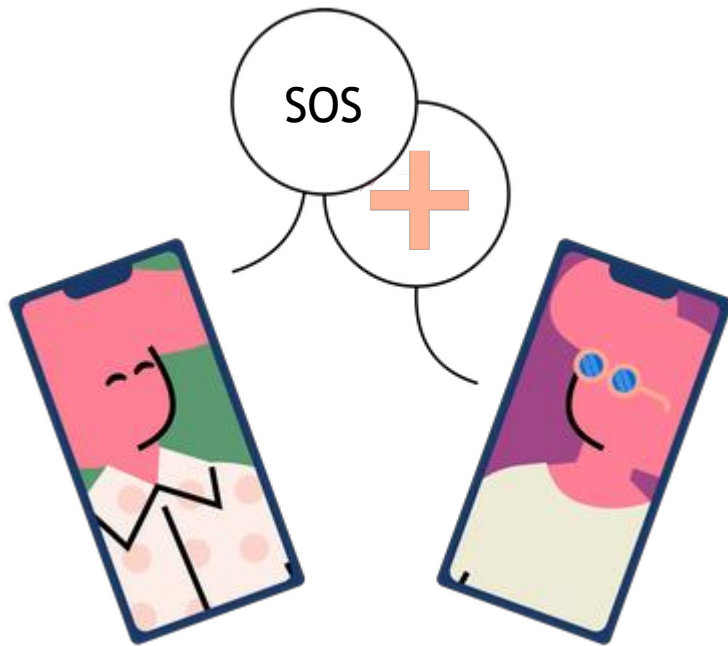




Safety / BAT 15

Meeting point : Building entrance



EMERGENCY PHONE NUMBER

▶ The Safety, Quality and Environment Department: 02 23 23 37 24 or 3 37 24



▶ Fire :18



▶ Vital emergency : 15

▶ The security post of the university : 02 23 20 20 00 or 3 33 33



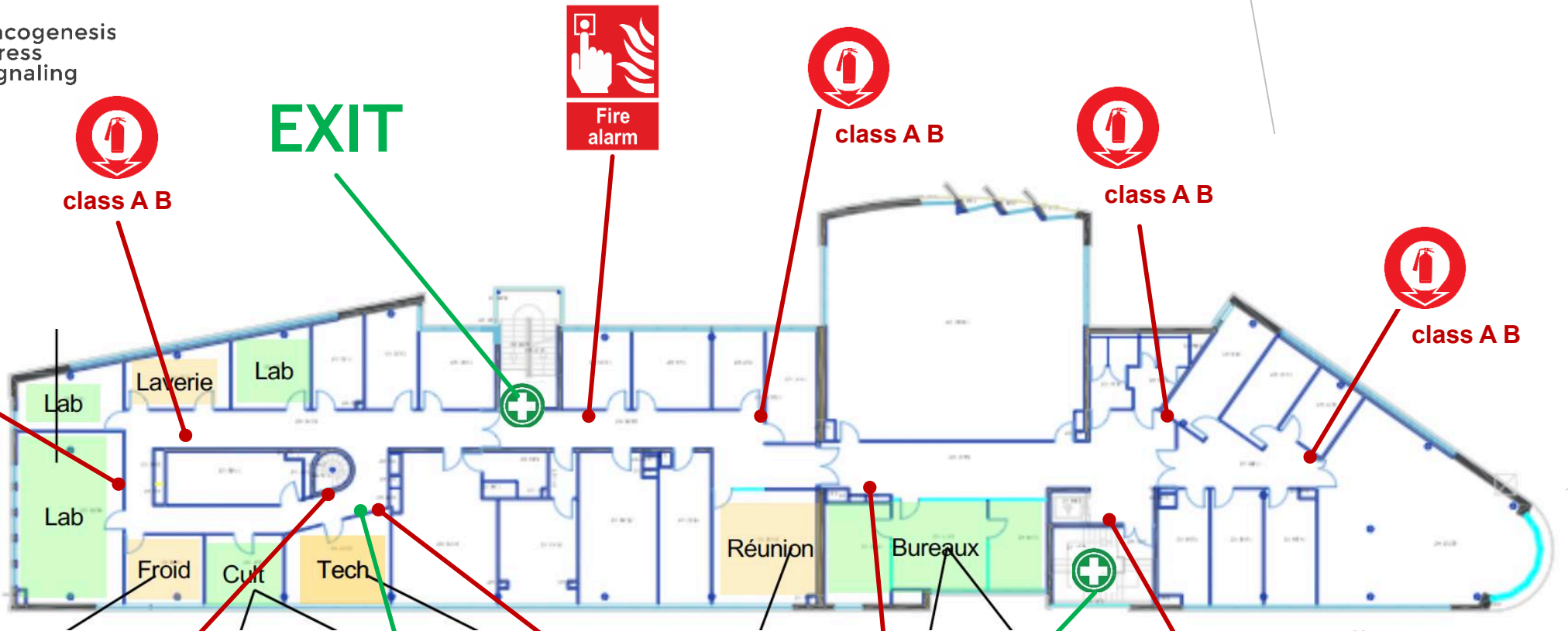
Meeting point BAT15



Evacuation plan and safety equipment B15 2nd floor



COUVERTURE ANTI-FEU
fire blanket



class A B

Fire alarm

class A B

class A B

class A B

class A B
class A

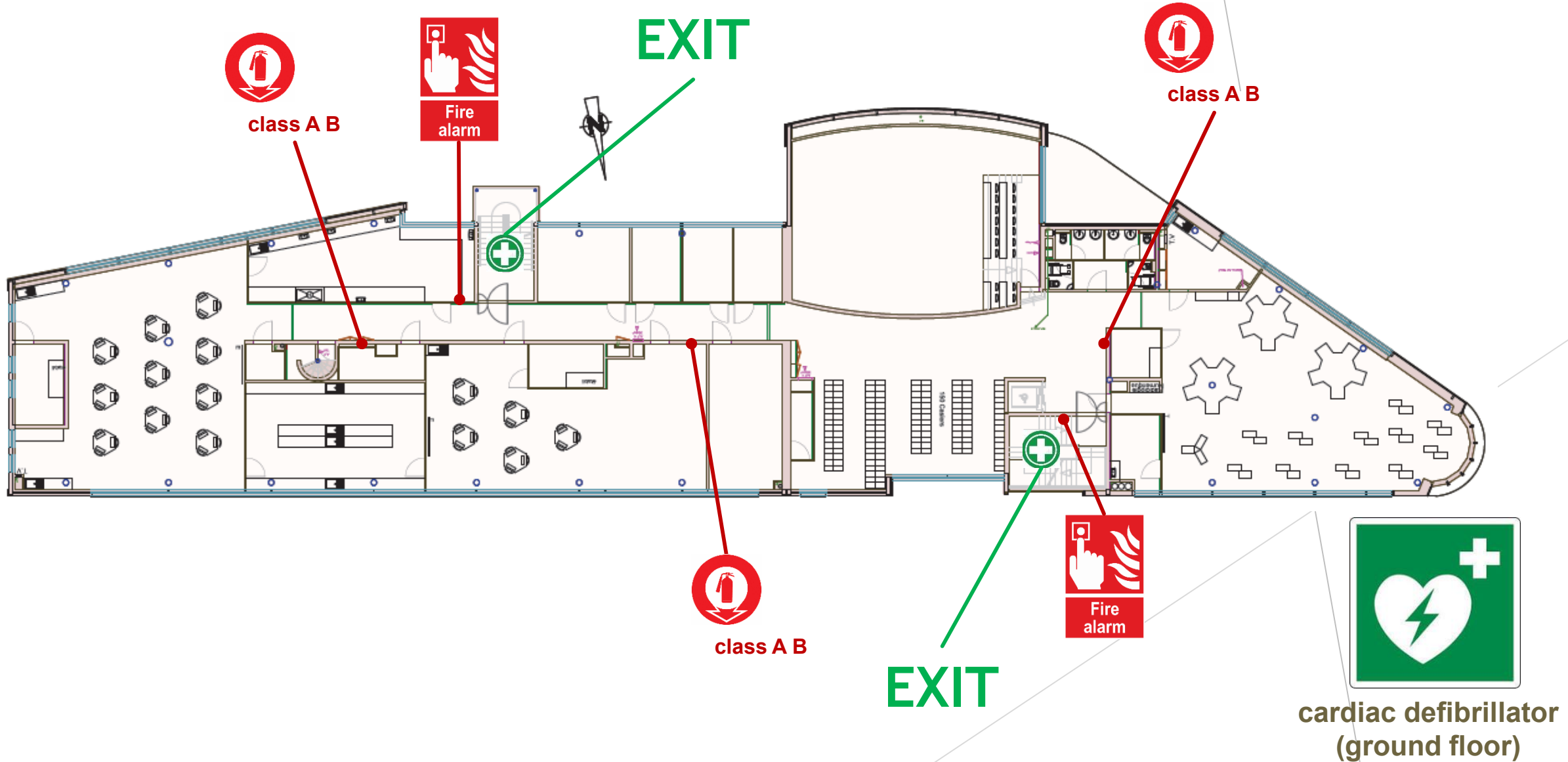
class A B
class A

emergency eye wash
emergency shower
first aid kit



cardiac defibrillator
(ground floor)

Evacuation plan and safety equipment B15 1st floor



Safety rules

► When to evacuate ?

Fire or
presence
of smoke



No
energy



Gas or
toxic
product
leakage



Bomb
alert



In event of evacuation with smoke:

- Get down to protect you of intoxication
- If you can't evacuation: close the door and caulk it

Safety rules

- ▶ Close the door when you leave a room to protect material, your scientific data etc.

